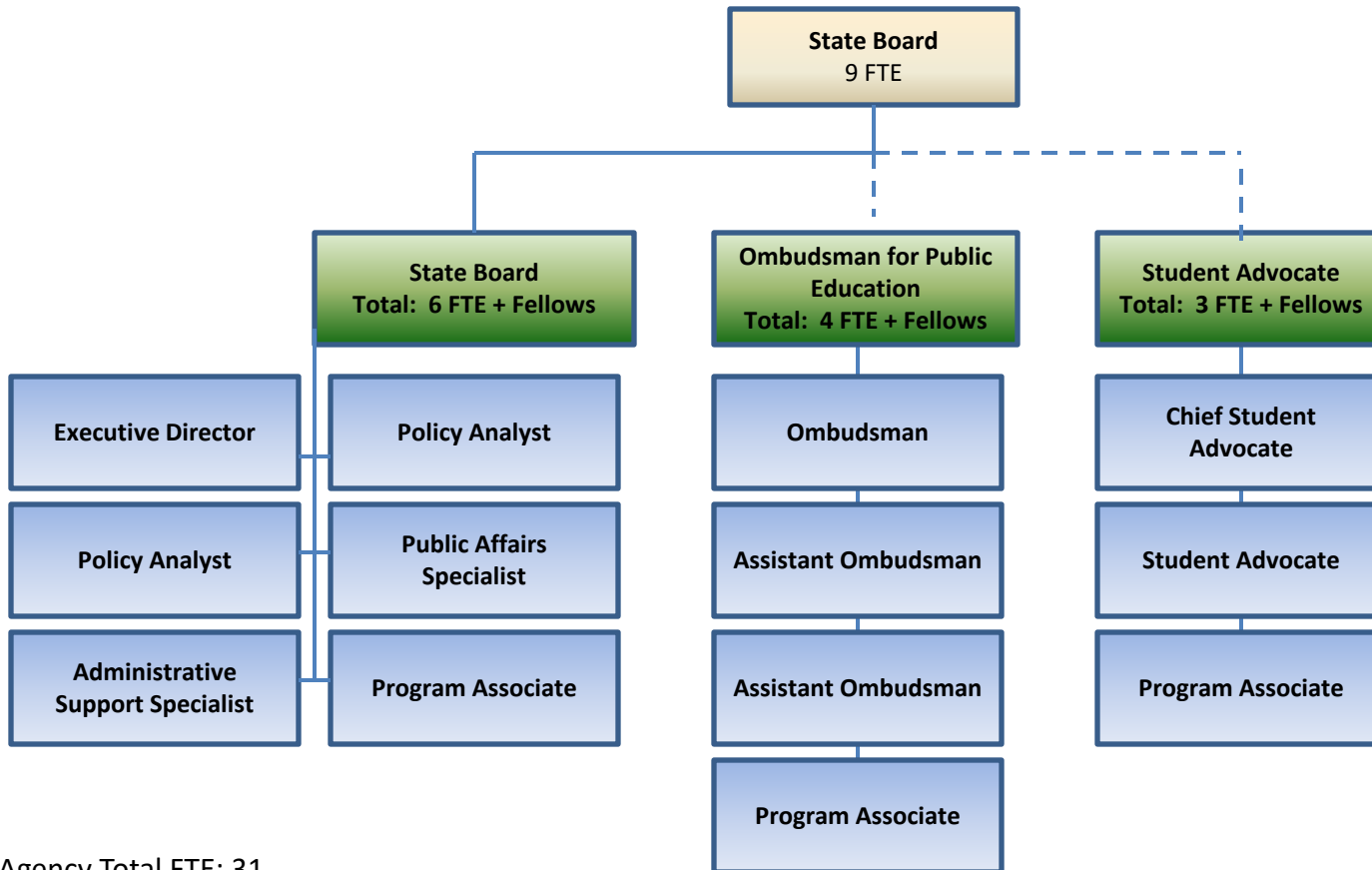


# FY 2020 State Board of Education Organization Chart



Agency Total FTE: 31

The dashed lines above represent the independent nature of the Offices of the Ombudsman and Student Advocate. The State Board provides administrative support and general oversight over the offices, but does not direct their activities. Please also note that each of the offices utilize part time fellows (approximately 18-20 per fiscal year) to supplement the work of FTEs. The fellows have their own position numbers.